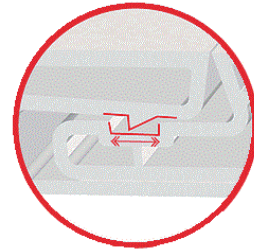




# INSTALLATION GUIDE

This Installation Guide is suitable for the 16" (400mm) EZ Liner

## Panels



## TRIMS AND ACCESSORIES

Standard Lengths of 12'



EZ J TRIM



EZ SILL TRIM  
(16')



EZ MULTI H



EZ INSIDE CORNER COVE



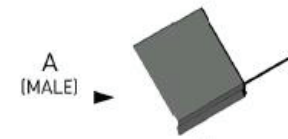
EZ CROWN  
BASE



EZ CROWN  
CAP



EZ 90 TRIM



A  
(MALE)



B  
(FEMALE)

EZ 2PC MULTI CORNER



73000 Airport Line • P.O. Box 137 • Hensall, ON • N0M 1X0  
Tel: 519-263-3107 • 1-888-763-7779 • Fax: 519-263-3108  
Email: sales@easybuildingproducts.ca • Web: easybuildingproduct.ca



## INSTALLATION GUIDE

**PLEASE READ THIS ENTIRE GUIDE PRIOR TO INSTALLATION AS THERE ARE DIFFERENT INSTALLATION METHODS FOR WALLS ONLY (PAGE 3) VS WALLS AND CEILINGS (PAGE 7).**

- ✓ IMPROPER STORAGE WILL VOID ANY WARRANTY DUE TO DAMAGE BY DIRECT SUNLIGHT OR NOT BEING ABLE TO BREATHE IN A CONFINED LOCATION.
- ✓ IF EZ LINER HAS BEEN PACKAGED AND SHIPPED ON A SKID, CUT ALL STRAPS AND LOOSEN ANY 2 X 4 SO THE MATERIAL IS NOT RESTRICTED FROM EXPANSION IN A CONFINED ENVIRONMENT.
- ✓ ALL MATERIAL SHOULD BE CLIMATIZED FOR 24 HOURS IN THE INSTALLATION LOCATION TO A MINIMUM OF 40 DEGREES FAHRENHEIT (5 DEGREES CELCIUS) PRIOR TO INSTALLATION.
- ✓ ALL RADIANT HEAT MUST BE AT A MINIMUM 18" (450mm) CLEARANCE FROM SURFACE OF EZ LINER.
- ✓ PROVIDE A CLEARANCE AT EITHER END HORIZONTALLY OF ¼" (6mm) FOR THE CEILING. PROVIDE A CLEARANCE OF ½" (12mm) VERTICALLY AT THE TOP OF THE WALL.
- ✓ ENSURE THAT YOU OPEN THE GAP BETWEEN EACH PANEL WITH A PUTTY KNIFE TO ALLOW FOR EXPANSION IN HOTTER TEMPERATURES WHEN INSTALLING IN COLD TEMPERATURE.

### Recommended Tools List

Ladders/Scaffolding  
 Rubber Mallet  
 Rotary Hammer Drill  
 Drill c/w Hole Saws  
 Caulking Gun

Tape Measure  
 Box Cutter  
 Battery Drill  
 Square & Straight Edge  
 Chalk Line  
 Circular Saw with Fine Tooth Blade



73000 Airport Line • P.O. Box 137 • Hensall, ON • N0M 1X0  
 Tel: 519-263-3107 • 1-888-763-7779 • Fax: 519-263-3108  
 Email: sales@easybuildingproducts.ca • Web: easybuildingproduct.ca



## INSTALLATION GUIDE

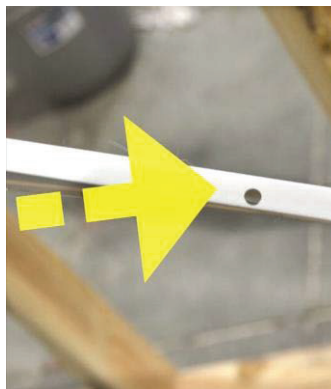
### WALL ONLY Installation

1. Wet vs Controlled (non-wet) environment:
  - a. Wet environment. Install the Multi Corner ( ) for the inside corners first. Take the trim to the top of the wall and 1" (25mm) up off the floor. Go to Step #2.
  - b. Controlled environment. Install the Multi Corner ( ) for the inside corners first. Take the trim to the top of the wall and to the floor for controlled environment then go to Step #3.
2. If walls are being installed in a wet environment such as a car wash, the bottom J Trim ( ) needs to be next. You must drill a ¼" (6mm) hole in the bottom of the J Trim @ 16" (400mm) centers for water drainage when the walls are washed with a power washer (Pictures A & B). For installation, run a chalk line all around the bottom of the floor about 1" (25mm) off the floor or use our plastic spacers to the necessary gap off the floor (Picture C). Install trims at a maximum of 12" centerline between screws.

Picture A



Picture B



Picture C



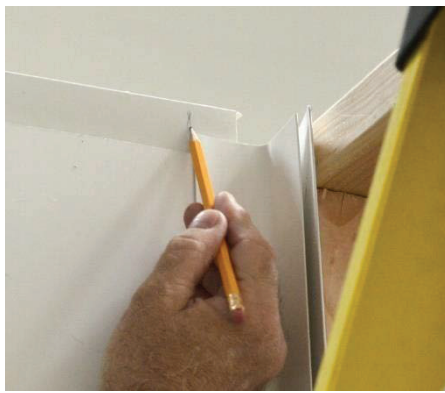
73000 Airport Line • P.O. Box 137 • Hensall, ON • N0M 1X0  
Tel: 519-263-3107 • 1-888-763-7779 • Fax: 519-263-3108  
Email: [sales@easybuildingproducts.ca](mailto:sales@easybuildingproducts.ca) • Web: [easybuildingproduct.ca](http://easybuildingproduct.ca)



## INSTALLATION GUIDE

3. If the walls are installed in a controlled environment (non-wet), then the J Trim can be installed directly to the floor and no drain holes are required.
4. Install the J Trim all around the top of the wall at whatever height the wall will be installed. Cut back the face of the J Trim the same as the bottom J Trim at each corner (Pictures D & E).

Picture D



Picture E



### **\*\*Account for expansion with J Trim\*\***

If the wall is not going to the ceiling, then install the J Trim  $\frac{1}{2}$ " (12mm) above the height of the panel for expansion of the panel in the J Trim. If the EZ Liner is going to the ceiling, then make sure the panel is cut  $\frac{1}{2}$ " (12mm) smaller than the opening size for future expansion.

5. Do a physical layout as it may be beneficial to have a panel seam at an obstruction or pipe penetration. If not, then measure the total distance and deduct the width of the panels (determine whether you have a 12" (300mm), 16" (400mm) or 18" (450mm) panel) being used so that you do not end up with a small sliver of a panel at one end.



73000 Airport Line • P.O. Box 137 • Hensall, ON • N0M 1X0  
Tel: 519-263-3107 • 1-888-763-7779 • Fax: 519-263-3108  
Email: [sales@easybuildingproducts.ca](mailto:sales@easybuildingproducts.ca) • Web: [easybuildingproduct.ca](http://easybuildingproduct.ca)



## INSTALLATION GUIDE

6. If you need to cut the first panel after you pre-measure, then start with this cut panel in the corner with the cut end going inside the Multi Corner ( ) and in the bottom track of the J Trim. Use a level to vertically plumb the first or second panel (Picture F). You will need to “bow” the panel slightly to get it into the top J Trim as well (Picture G). Carry on installing the balance of the panels with a 24” (600mm) centerline between screws and the top and bottom screw starting at 12” (300mm) (Picture H).

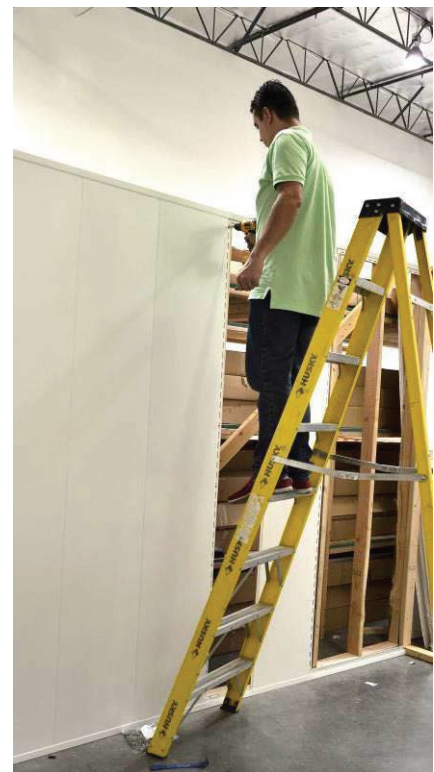
Picture F



Picture G



Picture H



7. If installing in a concrete or block wall, predrill with the Rotary Hammer Drill then screw the Tapcon screws with the battery drill. If going into another surface, please ensure you have the correct screw in Stainless Steel for the substructure.



73000 Airport Line • P.O. Box 137 • Hensall, ON • N0M 1X0  
Tel: 519-263-3107 • 1-888-763-7779 • Fax: 519-263-3108  
Email: [sales@easybuildingproducts.ca](mailto:sales@easybuildingproducts.ca) • Web: [easybuildingproduct.ca](http://easybuildingproduct.ca)



## INSTALLATION GUIDE

**\*\*Account for expansion when installing in cold temperatures\*\*  
Ensure that you open the gap between each panel with a putty knife to allow for expansion in hotter temperatures.**

8. The last panel must be inserted into the slot of the Multi Corner ( ) with a sheetrock putty knife. This will need ¼” (6mm) clearance for expansion so ensure the last panel is cut ¼” (6mm) less than the opening width.
  
9. If you are mounting a heavy object to the wall such an electrical box then you should use the plastic spacers to prevent the panel from being crushed if the screws are tightened too tight. The spacer is just a little thicker than the panel. Drill a hole 1” (25mm) in diameter and fit the spacer in the hole. The inner hole can now receive any bolt or screw up to ½” (12mm) in diameter and will leave the object just short of hitting the panel.

Turn to next page for WALL and CEILING installation.



73000 Airport Line • P.O. Box 137 • Hensall, ON • N0M 1X0  
Tel: 519-263-3107 • 1-888-763-7779 • Fax: 519-263-3108  
Email: [sales@easybuildingproducts.ca](mailto:sales@easybuildingproducts.ca) • Web: [easybuildingproduct.ca](http://easybuildingproduct.ca)



## INSTALLATION GUIDE

### WALLS AND CEILING Installation

If the project is requiring installation of walls and ceilings, then there are several items that need to be determined first:

a) Is it a wet environment?

- i. If so the J Trim needs to be installed per Step #2 on WALL ONLY Installation.
- ii. If not, then J Trim needs to be installed per Step #3 on WALL ONLY Installation.

b) Is it a food safe environment?

- i. If so, then you need to use the Multi Corner ( ) for the wall to ceiling transition.
- ii. If not, then the assumption will be a 2-piece Crown Trim ( ) for the wall to ceiling transition.

1. **Method for Food Safe.** If the Multi Corner ( ) is used, then it must be installed first around the perimeter of the wall to ceiling joint. It would not matter after this installation if the wall or ceiling was installed next. If the wall is installed next, then go to the WALL ONLY Installation and start from Item #3 for the J Trim on the ground.



73000 Airport Line • P.O. Box 137 • Hensall, ON • N0M 1X0  
Tel: 519-263-3107 • 1-888-763-7779 • Fax: 519-263-3108  
Email: sales@easybuildingproducts.ca • Web: easybuildingproduct.ca



## INSTALLATION GUIDE

2. When the ceiling is installed you will first need to determine the direction of the ceiling panels.
  - i. If the panels are running the length of the room and perpendicular to the trusses, then you **MUST make sure that you received Multi H Trims ( )** to join the lengths together.
  - ii. If both the panels and joists are running the width of the room, then a sub-frame needs to be installed at 24" (MM) centers. Once the sub frame is completed, then proceed to install the ceiling panels as in Item 3 (Picture I).

Picture I



3. Start at one end and clip the end of the panel into the Multi Corner ( ) that has already been installed. Ensure to pull it back with a ½" (12mm) gap for expansion if installed in cold weather. Fasten to the joists at a minimum of every 24" (600mm) c/l. If you do not hit a joist you can add a piece of wood blocking at the end of the panel so the Multi H Trim ( ) has a fastening point. Keep with this procedure until the last panel needs to be cut leaving the ½" (12mm) gap when it is slid into the Multi Corner ( ).



73000 Airport Line • P.O. Box 137 • Hensall, ON • N0M 1X0  
Tel: 519-263-3107 • 1-888-763-7779 • Fax: 519-263-3108  
Email: sales@easybuildingproducts.ca • Web: easybuildingproduct.ca





## INSTALLATION GUIDE

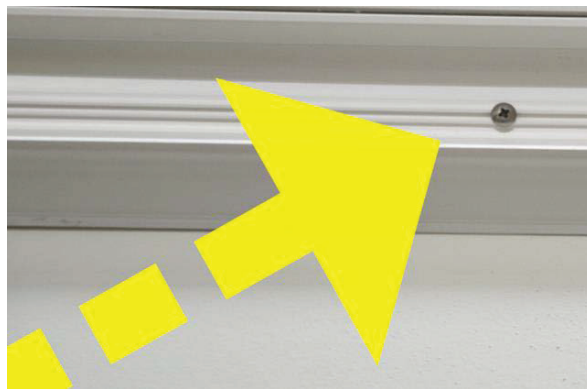
Now it is time to install the wall panels. You can install the wall panels exactly as per the section **Installation for a WALL ONLY Installation**. The only difference is that the panel will be inserted into the track of the Multi Corner ( ) instead of the J Trim at the top. Everything else is the same.

4. **Method for Regular Installation.** Install the ceiling without any trim at the junction of the ceiling and wall. Ensure you leave the required clearances at each end for future expansion if installed in cold weather. After installation of the ceiling panels, install the J Trim based on the method of whether the J Trim goes all the way to the floor or not. Once all the wall panels are installed (as per WALL ONLY Installation) then you need to go back and install the Crown Base and Cap. Premeasure and miter cut for each corner with the base and cap installed together (Picture J). Install the Crown Base first and ensure the screw is fastened in the little track (Picture K). This will allow the flex piece to not have any bulges. Then slip in the Crown Cap to cover up all the screws.

Picture J



Picture K



73000 Airport Line • P.O. Box 137 • Hensall, ON • N0M 1X0  
Tel: 519-263-3107 • 1-888-763-7779 • Fax: 519-263-3108  
Email: [sales@easybuildingproducts.ca](mailto:sales@easybuildingproducts.ca) • Web: [easybuildingproduct.ca](http://easybuildingproduct.ca)