



Richards-Wilcox
Garage Doors

THERMATITE®



T200C OVERHEAD SECTIONAL INSULATED STEEL DOORS

- Fabricated from pre-painted, hot dipped stucco embossed galvanized steel.



- Insulated with 2" of Neufoam™ polyurethane insulation. CFC and HCFC free.



- Sections feature Weatherlock™ thermal break and tongue and groove section joint.

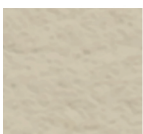
Unique Multi-Ribbed (MR) Profile

- Multi-Ribbed profile complements contemporary architecture
- Perfect choice when aesthetics are a key consideration
- Non-repeating stucco surface texture resists scratches and dirt

Ribbed Profile

- Recognized as a standard look on many door systems that are already installed
- RW can provide matching section replacement options to customers quickly and efficiently

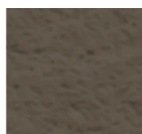
Available in 9 Standard Colours



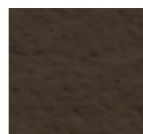
Almond



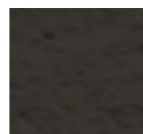
Black



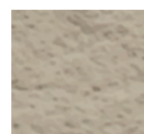
Bronze



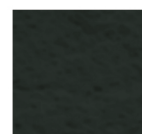
Brown



Café



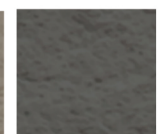
Desert Tan



Iron Ore



Sandstone



Slate
Grey