

# 6" EZ FORMS®

## Concrete Form Assembly System

### Horizontal 'Push-Click' Installation

A cost-effective option to traditional concrete wall construction, EZ Forms® is a revolutionary new concrete wall-forming system. Every joint of this innovative system comes with an option to have a built-in flexible seal to resist unwanted liquid/gas penetration.

These stay-in-place forms are made from an extremely durable PVC material that is filled with pre-mixed concrete and rebar reinforcement. This creates a nearly indestructible wall that's energy-efficient, reflects sound, and is highly resilient in storm-prone areas.

Compared to similar systems, EZ Forms® is easier to handle and erect. The forms and spacers interlock horizontally, providing a headache-free installation. No lifting the pieces up! Simply 'push-n-click' the pieces together for a quick and fast wall assembly.

Because the system's form pieces are nine inches in length, they accommodate vertical rebar placement spacing of eighteen inches perfectly, making these concrete wall forms more convenient to use than other like types of products.

In addition, this concrete form system also features a unique three-piece corner. The EZ Forms® three-piece corner makes installing a corner simple, allowing for easy fitment and access to all rebars. This unique design was created to resolve both installers and inspector's worst nightmares.



#### KEY ADVANTAGES OF 6" EZ FORMS®:

- Horizontal 'Push-n-Click' Install System
- Unique 3-Piece Corner Assembly
- Highly Resistant to Strong Winds & Fire
- Energy & Installation Cost Savings
- Low Maintenance & Easy-to-Clean
- Ideal for Above Grade Walls



## Quick & Fast Wall Assembly



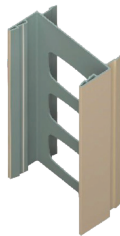
## Revolutionary, Innovative, Easier to Install

EZ Forms® is a new and revolutionary stay-in place concrete form assembly system. The innovative interlocking system allows for headache-free horizontal (push-click) installation. The 6-inch core size is typically used for commercial above-grade wall applications such as walls built on slabs.

The new and revolutionary concrete form assembly system.



6" Form



2.25" Spacer



1.75" Spacer



6" Cap

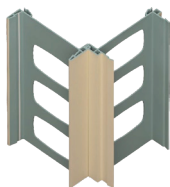


Female Starter



Male Starter

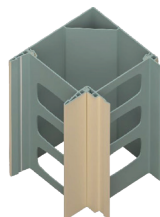
The 3-piece corner makes installing a corner simple. It allows for easy fitment and access to all rebars. The design was created to resolve installer and inspector's worst nightmare.



3 pc Corner  
(inside assembled)



3 pc Corner  
(apart)



3 pc Corner  
(assembled)

### 6" EZ Forms® Standard Colour Chart



White



Beige



Gray

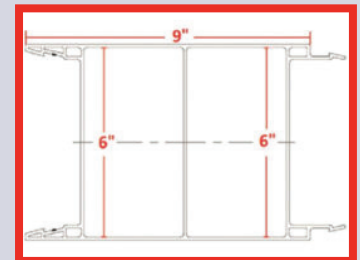
*Custom colours available!  
Call or email us to inquire  
about pricing and availability.*



**EZ Forms® is Revolutionary:**  
Horizontal (push-click) installation.



**EZ Forms® is Innovative:**  
Leakage is eliminated because  
webs are not back to back.



**EZ Forms® is Easier:**  
9" length accommodates the vertical  
rebar placement spacing of 18" perfectly.

#### Distributed By:

Easy Building Products is a leading metal roofing manufacturer in rural Ontario with 40 plus years of experience in high quality roll-formed steel roofing and siding products.

**"Working Hard For Your Success"**

Contact us today for complete  
product information:

[www.easybuildingproducts.ca](http://www.easybuildingproducts.ca)

[contact@easybuildingproducts.ca](mailto:contact@easybuildingproducts.ca)



Phone: 519-263-3107

Toll Free: 1-888-763-7779

Fax: 519-263-3108