

EZ LINER® PVC Interlocking Panels



Ideal Replacement for Conventional Walls & Ceilings

EZ Liner® Interlocking Panels are ideal wherever you need a smooth finish that is easy-to-clean, low maintenance, hygienic, and abuse resistant. Perfect for lining interior walls and ceilings. Owners of agricultural structures, light industrial buildings, cannabis facilities, and vehicle wash bays regularly choose EZ Liner® PVC interlocking panel.

The EZ Liner® panel surface is highly resistant to moisture, mold, corrosion, and most chemicals. Light in weight and easy to work with, EZ Liner® panels require no special training or tools to install. The panel's tongue and groove design makes both vertical and horizontal installation quick and easy. The EZ Liner® all-weather interlocking system allows for panel expansion and contraction due to temperature change for an always seamless appearance!

Manufactured from 100% virgin PVC material, EZ Liner® PVC panels are safe to work with using normal construction practices and the waste material is recyclable. Designed for the most demanding applications, EZ Liner® PVC interlocking liner panels meet and/or exceed modern hygienic construction and statutory building codes.

For all Applications

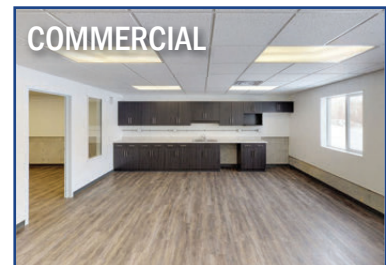


KEY ADVANTAGES:

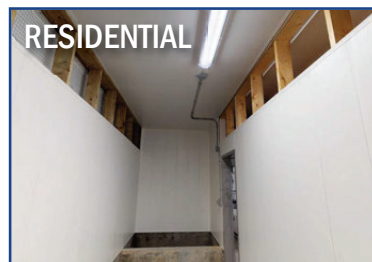
- Quick & Easy Installation - Install Savings
- EZ Liner® Trim System - Easy to Install
- All-Weather Interlocking System
- Pre-Slotted Nailing Flange
- Hidden Fasteners Provide Smooth Finish
- Designed for Rigidity & Strength
- Resistant to Moisture & Most Chemicals
- Easy Maintenance - Basic Power Washing
- Class A Smoke & Flame Spread



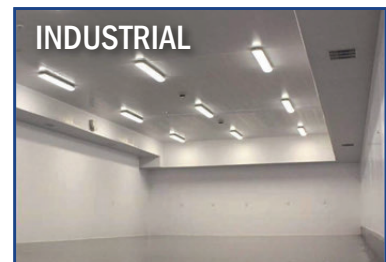
AGRICULTURAL



COMMERCIAL



RESIDENTIAL



INDUSTRIAL



Strong, Durable, Easy Installation

EZ Liner® PVC Interlocking Panels have your walls and ceilings covered. The EZ Liner® panel is recommended for a broad range of agricultural, industrial, commercial, and residential interior applications including:

Agricultural

- Dairy Buildings
- Horse Stables
- Poultry Shelters
- Fisheries
- Grain Storage

Industrial

- Food Processing
- Meat Packing
- Laboratories
- Refrigerated Units
- Warehouses

Commercial



- Car/Truck Washes
- Laundromats
- Office Buildings
- Supermarkets
- Restaurant Kitchens

Residential

- Workshops
- Garages
- Kennels
- Riding Stables
- Urban Bathhouse



PRODUCT SPECIFICATIONS

Profile:	3/8" 		
Panel Colours:	Ultra White*	Panel Width:	16"
	Grey, Black	Panel Width:	16"
Panel Weight:	16": 0.876 lbs per linear foot		
Panel Lengths: (Custom lengths available)	Ultra White: 10', 12', 14', 16' & 20' Grey: 16' & 20' Black: 16'		
Fire Rating:	Class A Smoke & Flame Spread		
Hygienic Rating:	Meets FDA & CFIA Requirements		
Warranty:	20-Year Limited Warranty		
Max Deflection:	3.278mm Based on 2 lbs. psf. Test imitated insulation weight in typical ceiling application.		



EZ LINER® PVC TRIM SYSTEM

Stocked in Ultra White



J-Trim



Drip Trim



Sill Trim



Multi-H



Inside Corner Cove



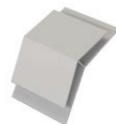
Crown Cap
& Crown Base



2 pc H-Trim



2 pc Multi-Corner



45-Trim



90-Trim

Only select trims available in colours grey and black. Call for more information.

**ALL-WEATHER INTERLOCKING SYSTEM
FOR PANEL EXPANSION & CONTRACTION!**



Distributed By:

Easy Building Products is a leading metal roofing manufacturer in rural Ontario with 40 plus years of experience in high quality roll-formed steel roofing and siding products.

"Working Hard For Your Success"

Contact us today for complete product information:

www.easybuildingproducts.ca

contact@easybuildingproducts.ca



Phone: 519-263-3107

Toll Free: 1-888-763-7779

Fax: 519-263-3108