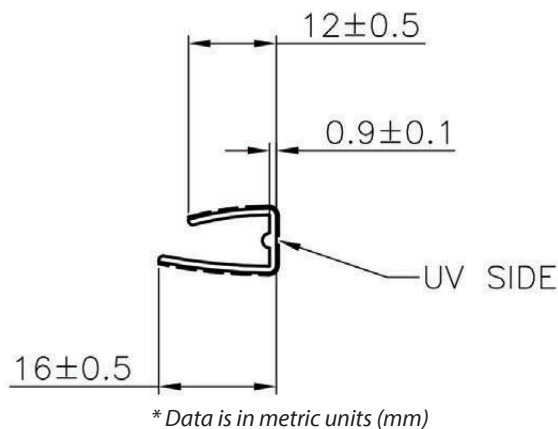


Multiwall Polycarbonate Profiles

6mm U-Channel

"Caps of sheet ends"



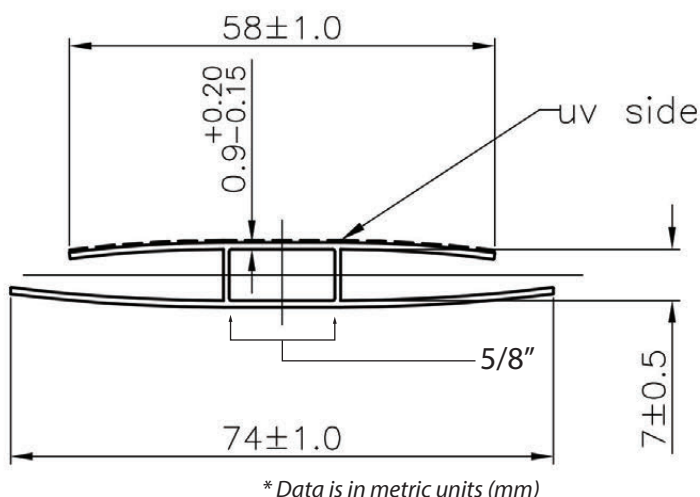
A polycarbonate U-Channel is used to cap of the top and bottom of a multiwall polycarbonate sheet, preventing dust, bugs, and moisture from entering the flutes.

INSTALLATION TIPS:

- Multiwall polycarbonate profiles may be used in conjunction with anti-dust tape to help prevent mold, algae, insects and dust from accumulating within the walls.
- The 'longer leg' of both profiles should be installed on the inside of the sheet, facing the interior of the structure.
- When using a H-channel, make sure to leave a .25" (1/4") gap or space between the edge of the multiwall sheet and the inside wall of the H-channel to allow for expansion and contraction.
- Try squirting a mild liquid dish detergent on the edge of the multiwall sheet. This will aid in sliding the profile on. Use a soft wet cloth to remove excess soap.
- Polycarbonate profiles are not intended as a waterproof solution. It is highly recommended that polycarbonate H-channels be installed vertically or with the slope. Installing H-channels horizontally may result in leaking.

6mm H-Channel

"Transition between two sheets"

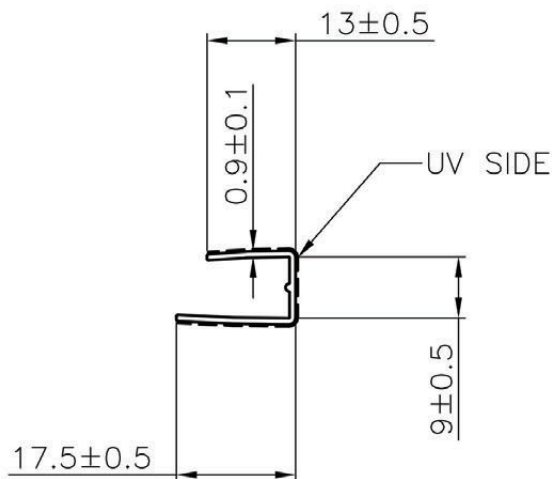


A polycarbonate H-Channel is used to join two multiwall polycarbonate sheets together, providing a finished, professional look.

Multiwall Polycarbonate Profiles

8mm U-Channel

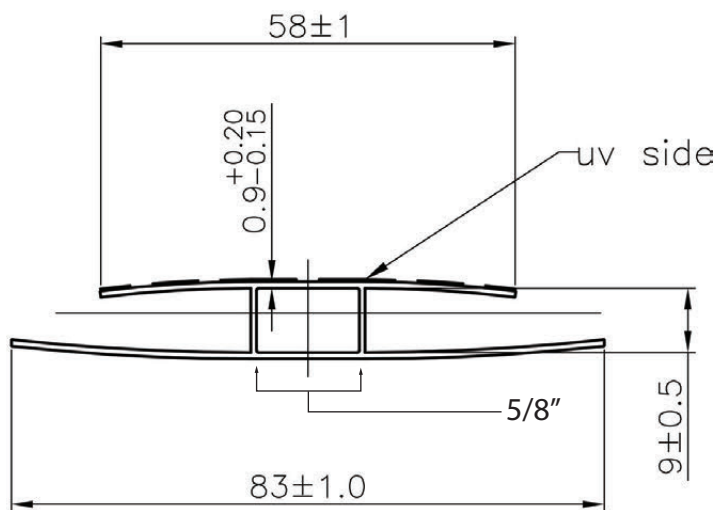
"Caps of sheet ends"



* Data is in metric units (mm)

8mm H-Channel

"Transition between two sheets"



* Data is in metric units (mm)

A polycarbonate U-Channel is used to cap of the top and bottom of a multiwall polycarbonate sheet, preventing dust, bugs, and moisture from entering the flutes.

INSTALLATION TIPS:

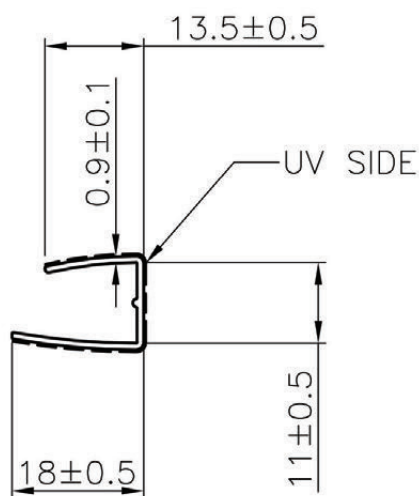
- Multiwall polycarbonate profiles may be used in conjunction with anti-dust tape to help prevent mold, algae, insects and dust from accumulating within the walls.
- The 'longer leg' of both profiles should be installed on the inside of the sheet, facing the interior of the structure.
- When using a H-channel, make sure to leave a .25" (1/4") gap or space between the edge of the multiwall sheet and the inside wall of the H-channel to allow for expansion and contraction.
- Try squirting a mild liquid dish detergent on the edge of the multiwall sheet. This will aid in sliding the profile on. Use a soft wet cloth to remove excess soap.
- Polycarbonate profiles are not intended as a waterproof solution. It is highly recommended that polycarbonate H-channels be installed vertically or with the slope. Installing H-channels horizontally may result in leaking.

A polycarbonate H-Channel is used to join two multiwall polycarbonate sheets together, providing a finished, professional look.

Multiwall Polycarbonate Profiles

10mm U-Channel

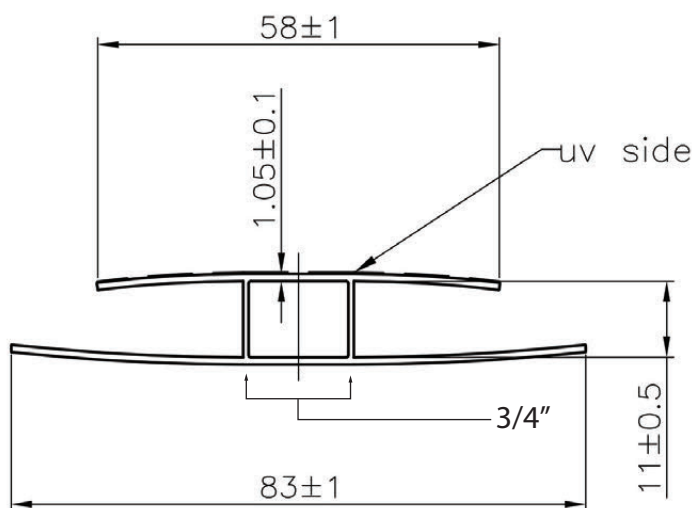
"Caps of sheet ends"



* Data is in metric units (mm)

10mm H-Channel

"Transition between two sheets"



* Data is in metric units (mm)

A polycarbonate U-Channel is used to cap of the top and bottom of a multiwall polycarbonate sheet, preventing dust, bugs, and moisture from entering the flutes.

INSTALLATION TIPS:

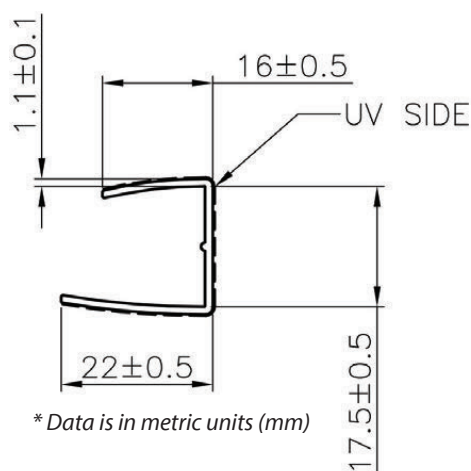
- Multiwall polycarbonate profiles may be used in conjunction with anti-dust tape to help prevent mold, algae, insects and dust from accumulating within the walls.
- The 'longer leg' of both profiles should be installed on the inside of the sheet, facing the interior of the structure.
- When using a H-channel, make sure to leave a .25" (1/4") gap or space between the edge of the multiwall sheet and the inside wall of the H-channel to allow for expansion and contraction.
- Try squirting a mild liquid dish detergent on the edge of the multiwall sheet. This will aid in sliding the profile on. Use a soft wet cloth to remove excess soap.
- Polycarbonate profiles are not intended as a waterproof solution. It is highly recommended that polycarbonate H-channels be installed vertically or with the slope. Installing H-channels horizontally may result in leaking.

A polycarbonate H-Channel is used to join two multiwall polycarbonate sheets together, providing a finished, professional look.

Multiwall Polycarbonate Profiles

16mm U-Channel

"Caps of sheet ends"



* Data is in metric units (mm)

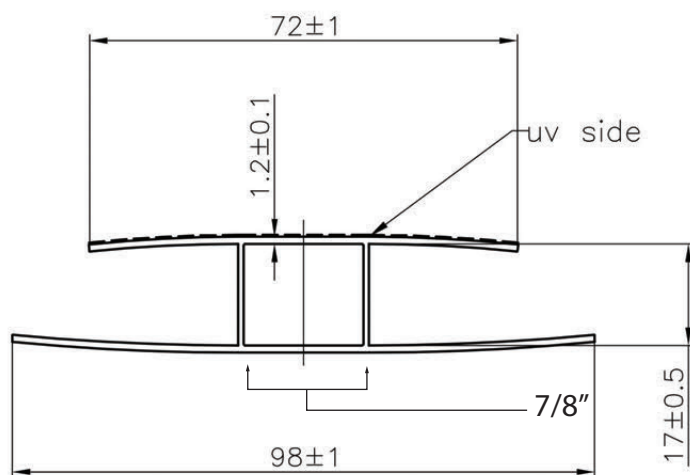
A polycarbonate U-Channel is used to cap of the top and bottom of a multiwall polycarbonate sheet, preventing dust, bugs, and moisture from entering the ues.

INSTALLATION TIPS:

- Multiwall polycarbonate profiles may be used in conjunction with anti-dust tape to help prevent mold, algae, insects and dust from accumulating within the walls.
- The 'longer leg' of both profiles should be installed on the inside of the sheet, facing the interior of the structure.
- When using a H-channel, make sure to leave a .25" (1/4") gap or space between the edge of the multiwall sheet and the inside wall of the H-channel to allow for expansion and contraction.
- Try squirting a mild liquid dish detergent on the edge of the multiwall sheet. This will aid in sliding the profile on. Use a soft wet cloth to remove excess soap.
- Polycarbonate profiles are not intended as a waterproof solution. It is highly recommended that polycarbonate H-channels be installed vertically or with the slope. Installing H-channels horizontally may result in leaking.

16mm H-Channel

"Transition between two sheets"



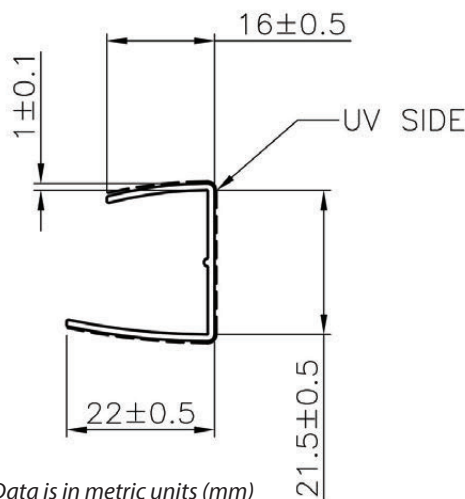
* Data is in metric units (mm)

A polycarbonate H-Channel is used to join two multiwall polycarbonate sheets together, providing a finished, professional look.

Multiwall Polycarbonate Profiles

20mm U-Channel

"Caps of sheet ends"



A polycarbonate U-Channel is used to cap of the top and bottom of a multiwall polycarbonate sheet, preventing dust, bugs, and moisture from entering the flutes.

INSTALLATION TIPS:

- Multiwall polycarbonate profiles may be used in conjunction with anti-dust tape to help prevent mold, algae, insects and dust from accumulating within the walls.
- The 'longer leg' of both profiles should be installed on the inside of the sheet, facing the interior of the structure.
- When using a H-channel, make sure to leave a .25" (1/4") gap or space between the edge of the multiwall sheet and the inside wall of the H-channel to allow for expansion and contraction.
- Try squirting a mild liquid dish detergent on the edge of the multiwall sheet. This will aid in sliding the profile on. Use a soft wet cloth to remove excess soap.
- Polycarbonate profiles are not intended as a waterproof solution. It is highly recommended that polycarbonate H-channels be installed vertically or with the slope. Installing H-channels horizontally may result in leaking.